

CC Baltic

VESSEL PARTICULARS	
Type	Heavy Deck Cargo Barge - Ballastable
Classification (will become B.V.)	ABS + A1 BARGE
Year Built	2015
Length	76.0 m (249'-4")
Breadth (moulded)	24.5m (80'-5")
Depth (moulded)	5.0m (16'-5")
Load Line (estimated)	3.99m (13'-1")
Deadweight (estimated)	5,500 MT (6,060 tons)
Deck Strength	20 MT per m2 (4,100 lb per ft2)
Hull Plating Thickness	Deck plating 18mm; bottom & side shell plating 12mm; All welding continuous throughout
Interior Coating	All voids fully epoxy coated, suitable for ballasting
Fendering	250 x 25mm - at bar fenders
Outfitting	Bollards - 64mt SWL on each corner; 36" cleats with 50mm doubler plate; 64mm SMIT brackets – 100mt SWL for main & emergency towing arrangements; fitted with chain bridles and pennant chain - 100mt SWL; Quick release manholes – recessed/- ush type; Bridle retrieval hand winch and A-frame
Hand Rail Stanchions	Quick release, twist lock type for easy removal



Particulars are believed to be correct but not guaranteed. Owners reserve the rights to amend the specifications without notifications. Particulars are entirely without warranty as to correctness and interested parties must inspect vessel's certificates & drawings and/or physically inspect the vessel.

LKL OCEANTRADE B.V.
Adriaen Banckerstraat 8
3115 JE Schiedam
Phone: +31 10 412 96
22
E-mail: mail@lkl.nl
www.lkl.nl



LKL Middle East Boulevard
Plaza tower 1
United Arab Emirates, Dubai
P.O. Box: 334032
Phone: +971563734526
E-mail: info@lklme.com
www.lklme.com





DRAFT / DWT SCALE

Draft (M)	Displ (MT)	DWT (MT)	Draft (M)	Displ (MT)	DWT (MT)
1.00	1,590	0,429	2.60	4,397	3,236
1.05	1,675	0,514	2.65	4,488	3,327
1.10	1,759	0,598	2.70	4,579	3,418
1.15	1,844	0,683	2.75	4,671	3,510
1.20	1,929	0,768	2.80	4,763	3,602
1.25	2,014	0,853	2.85	4,855	3,694
1.30	2,100	0,939	2.90	4,947	3,786
1.35	2,185	1,024	2.95	5,039	3,878
1.40	2,271	1,110	3.00	5,132	3,971
1.45	2,357	1,196	3.05	5,225	4,064
1.50	2,444	1,283	3.10	5,318	4,157
1.55	2,530	1,369	3.15	5,411	4,250
1.60	2,617	1,456	3.20	5,504	4,343
1.65	2,704	1,543	3.25	5,598	4,437
1.70	2,791	1,630	3.30	5,692	4,531
1.75	2,879	1,718	3.35	5,786	4,625
1.80	2,966	1,805	3.40	5,880	4,719
1.85	3,054	1,893	3.45	5,974	4,813
1.90	3,142	1,981	3.50	6,069	4,908
1.95	3,231	2,070	3.55	6,164	5,003
2.00	3,319	2,158	3.60	6,259	5,098
2.05	3,408	2,247	3.65	6,354	5,193
2.10	3,497	2,336	3.70	6,449	5,288
2.15	3,586	2,425	3.75	6,545	5,384
2.20	3,675	2,514	3.80	6,640	5,479
2.25	3,765	2,604	3.85	6,735	5,574
2.30	3,854	2,693	3.90	6,831	5,670
2.35	3,944	2,783	3.95	6,926	5,765
2.40	4,034	2,873	4.00	7,022	5,861
2.45	4,125	2,964	4.05	7,117	5,956
2.50	4,215	3,054	4.10	7,213	6,052
2.55	4,306	3,145			

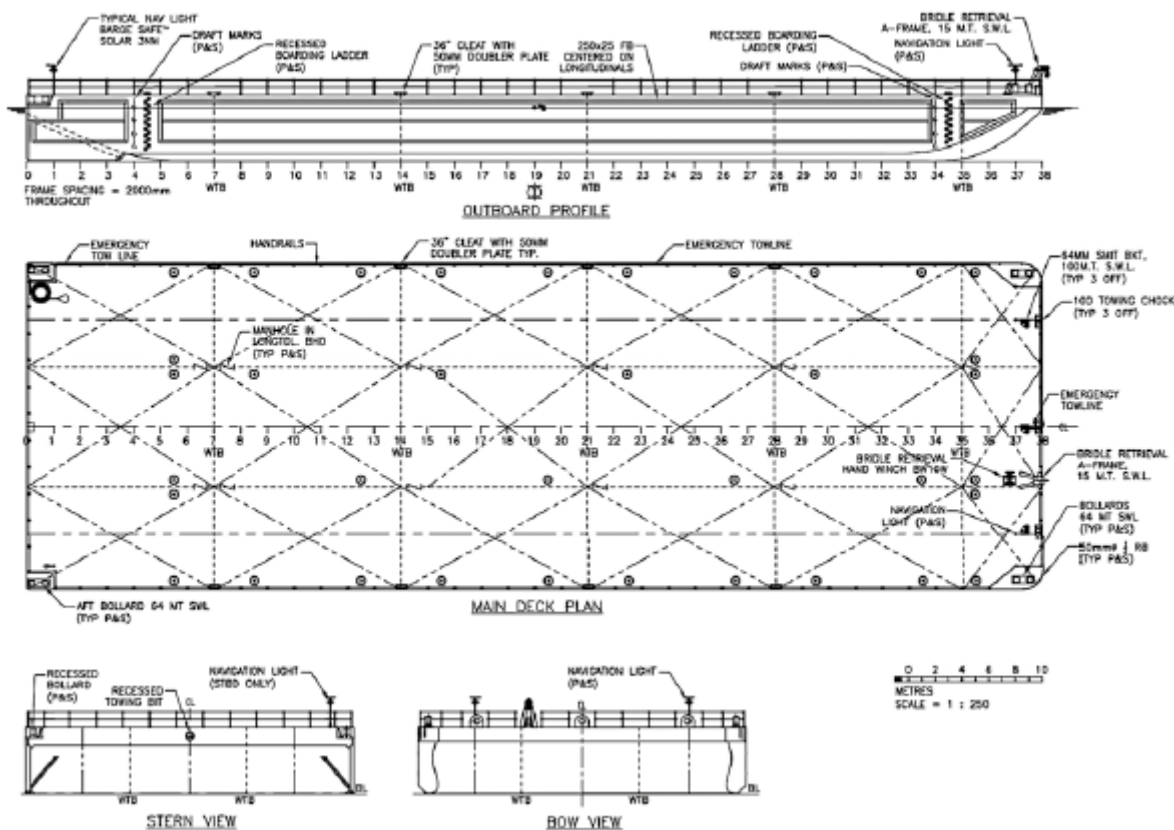
Particulars are believed to be correct but not guaranteed. Owners reserve the rights to amend the specifications without notifications. Particulars are entirely without warranty as to correctness and interested parties must inspect vessel's certificates & drawings and/or physically inspect the vessel.

LKL OCEANTRADE B.V.
 Adriaen Banckerstraat 8
 3115 JE Schiedam
Phone: +31 10 412 96
 22
E-mail: mail@lkl.nl
www.lkl.nl



LKL Middle East Boulevard
 Plaza tower 1
 United Arab Emirates, Dubai
 P.O. Box: 334032
Phone: +971563734526
E-mail: info@lklme.com
www.lklme.com

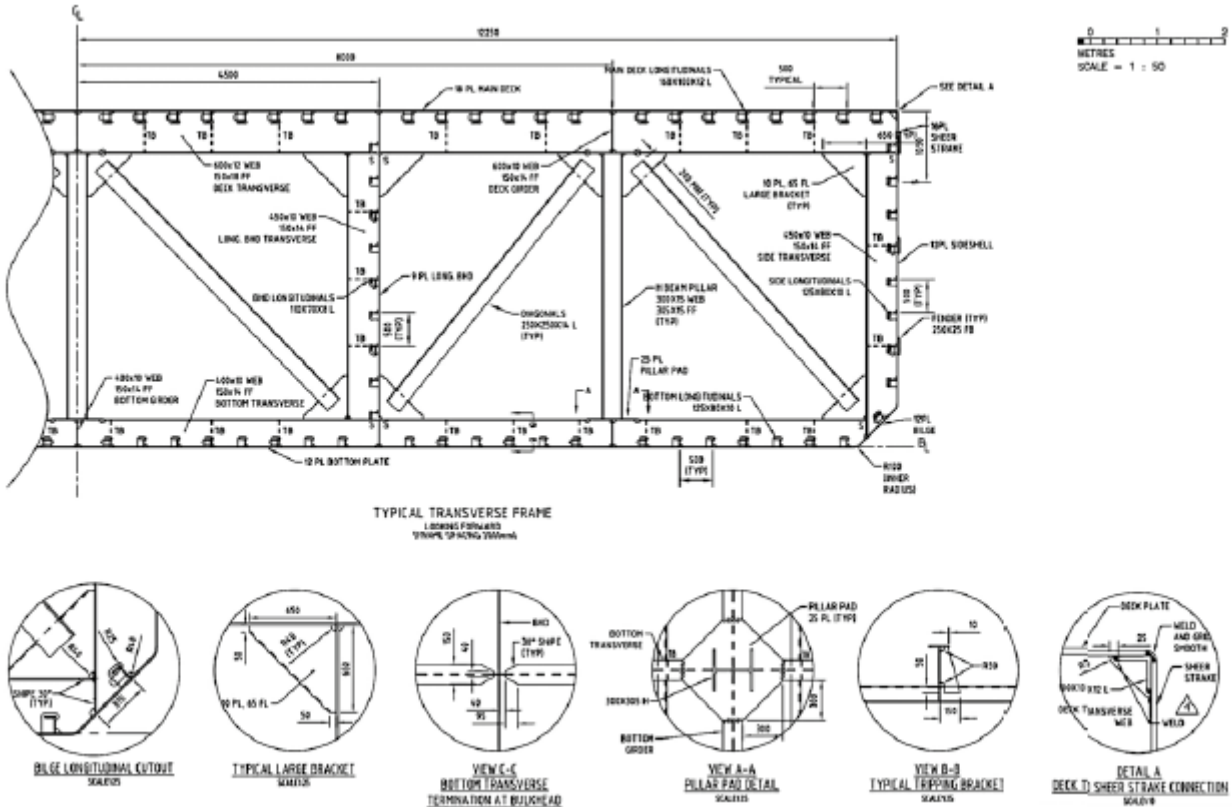




Particulars are believed to be correct but not guaranteed. Owners reserve the rights to amend the specifications without notifications. Particulars are entirely without warranty as to correctness and interested parties must inspect vessel's certificates & drawings and/or physically inspect the vessel.

LKL OCEANTRADE B.V.
 Adriaen Banckerstraat 8
 3115 JE Schiedam
Phone: +31 10 412 96
 22
E-mail: mail@lkl.nl
www.lkl.nl

LKL Middle East Boulevard
 Plaza tower 1
 United Arab Emirates, Dubai
 P.O. Box: 334032
Phone: +971563734526
E-mail: info@lklme.com
www.lklme.com



Particulars are believed to be correct but not guaranteed. Owners reserve the rights to amend the specifications without notifications. Particulars are entirely without warranty as to correctness and interested parties must inspect vessel's certificates & drawings and/or physically inspect the vessel.

LKL OCEANTRADE B.V.
Adriaen Banckerstraat 8
3115 JE Schiedam
Phone: +31 10 412 96
22
E-mail: mail@lkl.nl
www.lkl.nl

LKL Middle East Boulevard
Plaza tower 1
United Arab Emirates, Dubai
P.O. Box: 334032
Phone: +971563734526
E-mail: info@lklme.com
www.lklme.com