

## AMT Crusader

VESSEL PARTICULARS	
Class	Lloyds +100A1 Pontoon
Built	China 2010
Registry	Liverpool, United Kingdom
GT	9190 T
NT	2757 T
TECHNICAL DETAILS	
Length overall	122.0 m
Beam	36.6 m
Depth	7.6 m
Max draught	5.8 m
DWT on max draught	19,152 tonnes
Deck area	4,200 m <sup>2</sup>
Frame spacing	2,500 mm
Deck loading	20 tonnes per sq meter
Point loads	Up to 750 tonnes
EQUIPMENT	
Ballast pumps	Hamworthy pumps with max rated capacity of 1,000m <sup>3</sup> /hour each
Machinery	2 Caterpillar engines each of 480 hp
BALLAST SYSTEM	
	Valves are hydraulically operated from control room together with pumps and compressors Ballasting and deballasting is effected using the pumps
Submersion	Barge can be submerged to a maximum of 7.0m over the forward end of barge deck
Mooring system	1 anchor windlass with bow anchor of 3.5 tonnes



Particulars are believed to be correct but not guaranteed. Owners reserve the rights to amend the specifications without notifications. Particulars are entirely without warranty as to correctness and interested parties must inspect vessel's certificates & drawings and/or physically inspect the vessel.

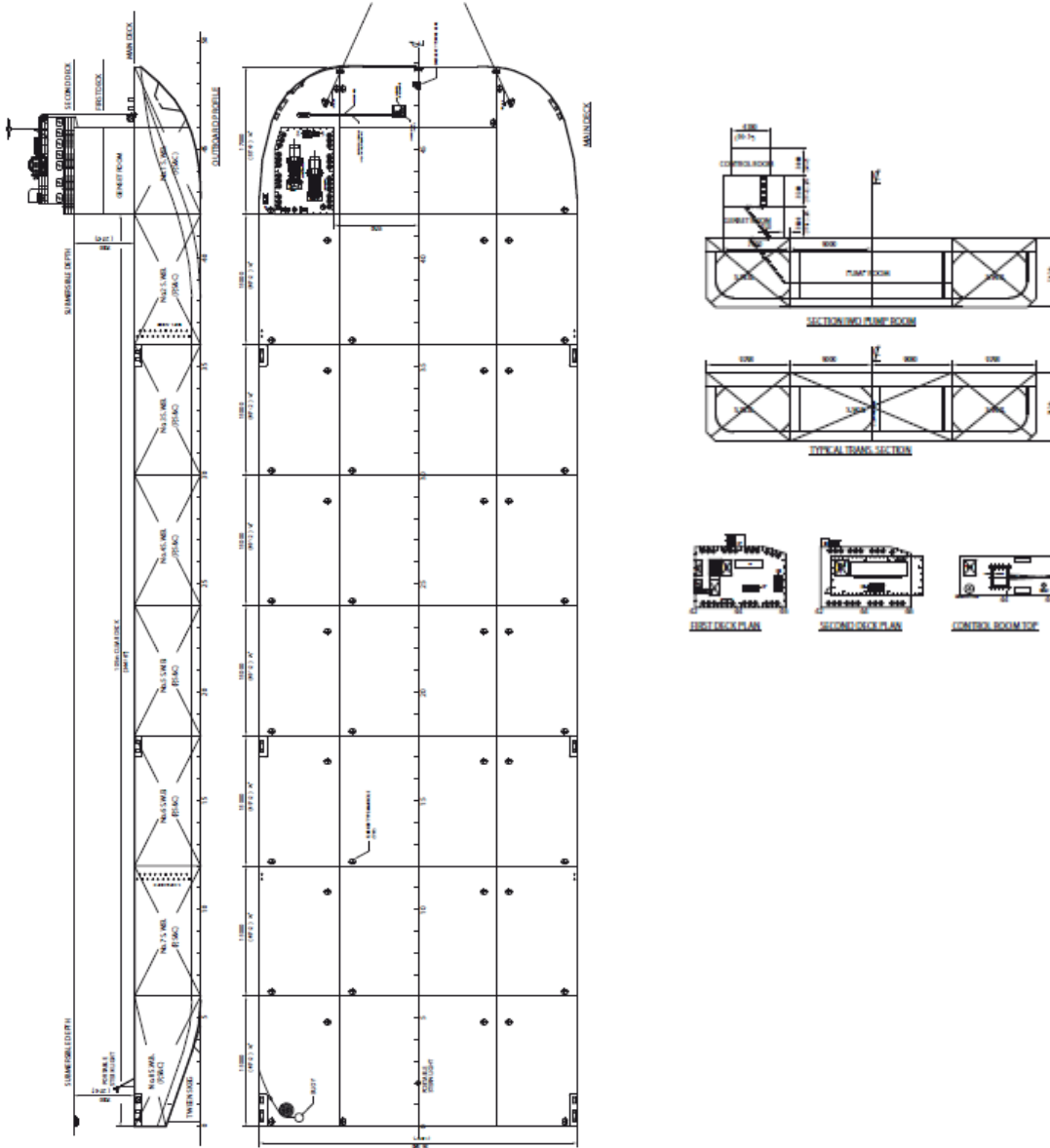
**LKL OCEANTRADE B.V.**  
Adriaen Banckerstraat 8  
3115 JE Schiedam  
**Phone:** +31 10 412 96  
22  
**E-mail:** [mail@lkl.nl](mailto:mail@lkl.nl)  
[www.lkl.nl](http://www.lkl.nl)



LKL Middle East Boulevard  
Plaza tower 1  
United Arab Emirates, Dubai  
P.O. Box: 334032  
**Phone:** +971563734526  
**E-mail:** [info@lklme.com](mailto:info@lklme.com)  
[www.lklme.com](http://www.lklme.com)



Load distribution



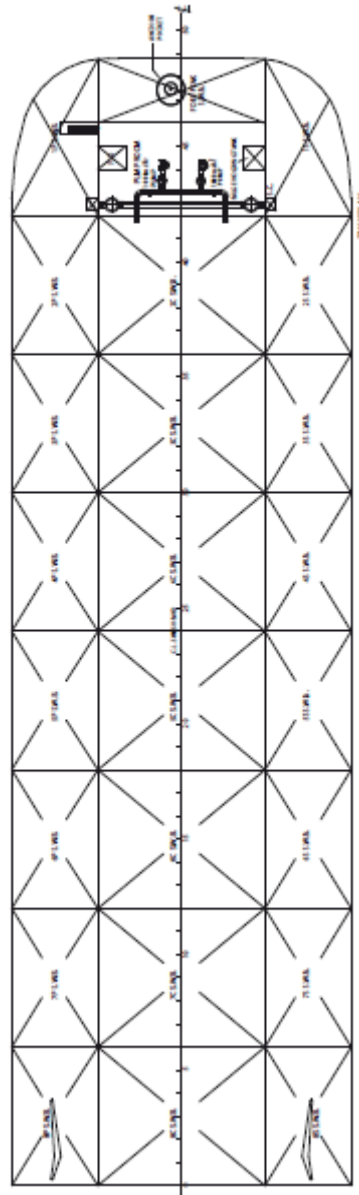
Particulars are believed to be correct but not guaranteed. Owners reserve the rights to amend the specifications without notifications. Particulars are entirely without warranty as to correctness and interested parties must inspect vessel's certificates & drawings and/or physically inspect the vessel.

**LKL OCEANTRADE B.V.**  
 Adriaen Banckerstraat 8  
 3115 JE Schiedam  
**Phone:** +31 10 412 96  
 22  
**E-mail:** [mail@lkl.nl](mailto:mail@lkl.nl)  
[www.lkl.nl](http://www.lkl.nl)

LKL Middle East Boulevard  
 Plaza tower 1  
 United Arab Emirates, Dubai  
 P.O. Box: 334032  
**Phone:** +971563734526  
**E-mail:** [info@lklme.com](mailto:info@lklme.com)  
[www.lklme.com](http://www.lklme.com)



elevation and plan



Particulars are believed to be correct but not guaranteed. Owners reserve the rights to amend the specifications without notifications. Particulars are entirely without warranty as to correctness and interested parties must inspect vessel's certificates & drawings and/or physically inspect the vessel.

**LKL OCEANTRADE B.V.**  
Adriaen Banckerstraat 8  
3115 JE Schiedam  
**Phone:** +31 10 412 96  
22  
**E-mail:** [mail@lkl.nl](mailto:mail@lkl.nl)  
[www.lkl.nl](http://www.lkl.nl)



LKL Middle East Boulevard  
Plaza tower 1  
United Arab Emirates, Dubai  
P.O. Box: 334032  
**Phone:** +971563734526  
**E-mail:** [info@lklme.com](mailto:info@lklme.com)  
[www.lklme.com](http://www.lklme.com)

