


AMT Venturer

VESSEL PARTICULARS		
MAIN DETAILS		
Class	ABS +100A1 Barge	
Built	China 2007	
Port of Registry	Bergen, Norway	
Official number	LG2019	
GT	8,191	
NT	2,457	
Call Sign	PJKR	
IMO Number	9562245	
Year Build	2010	
Builder	Yangzi Shipyard, China	
GT	9,119	
NT	2,735	
TECHNICAL DETAILS		
Length overall	120.0 m	
Beam	33.5 m	
Depth	7.6 m	
Max Draught	5.7 m	
DWT on max draught	17,400 tonnes	
Deck area	3,735m ²	BALLAST SYSTEM
Frame spacing	1,800 mm	Valves are operated from pumproom
Deck loading	20 tonnes per sq meter	Ballasting and deballasting is effected using the pumps
Point loads	Up to 400 tonnes	
EQUIPMENT		MOORING SYSTEM
Ballast pumps	2 KSB pumps with max rated capacity of 1,800m ³ /hour each	1 hydraulically driven anchor winch with bow anchor of 7.4 tonnes
Machinery	2 Volvo engines each of 350 hp	
	55 hp engine driving harbour generator	

Particulars are believed to be correct but not guaranteed. Owners reserve the rights to amend the specifications without notifications. Particulars are entirely without warranty as to correctness and interested parties must inspect vessel's certificates & drawings and/or physically inspect the vessel.

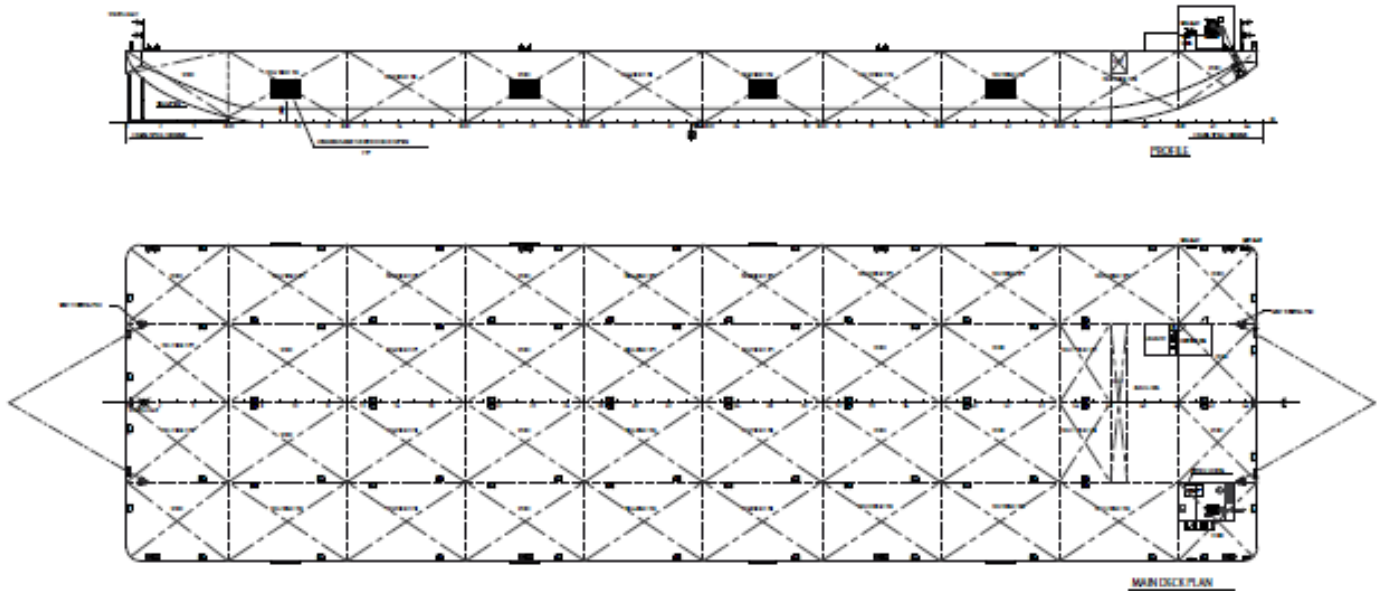
LKL OCEANTRADE B.V.
 Adriaen Banckerstraat 8
 3115 JE Schiedam
Phone: +31 10 412 96
 22
E-mail: mail@lkl.nl
www.lkl.nl



LKL Middle East Boulevard
 Plaza tower 1
 United Arab Emirates, Dubai
 P.O. Box: 334032
Phone: +971563734526
E-mail: info@lklme.com
www.lklme.com



elevation and plan



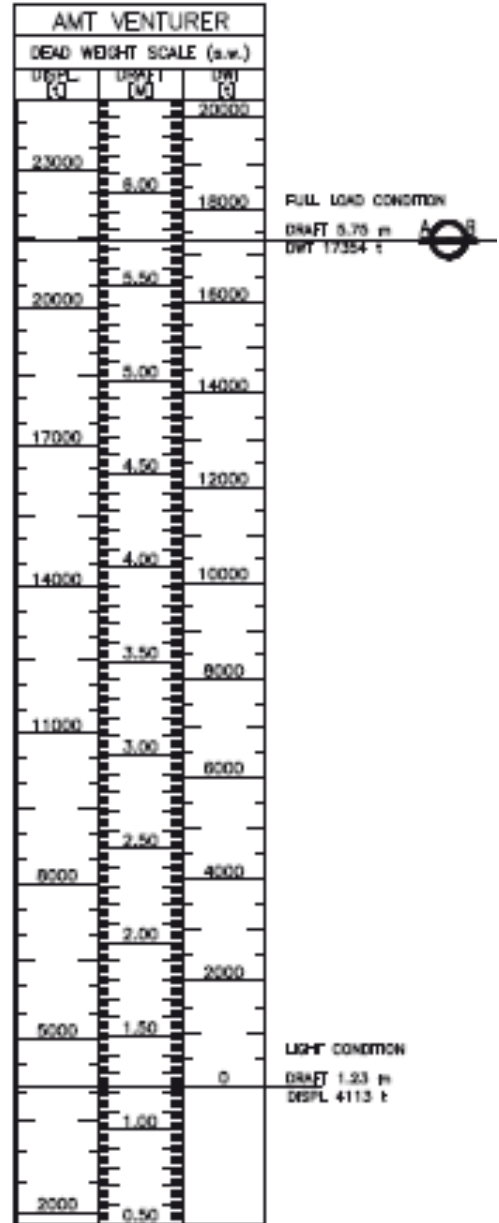
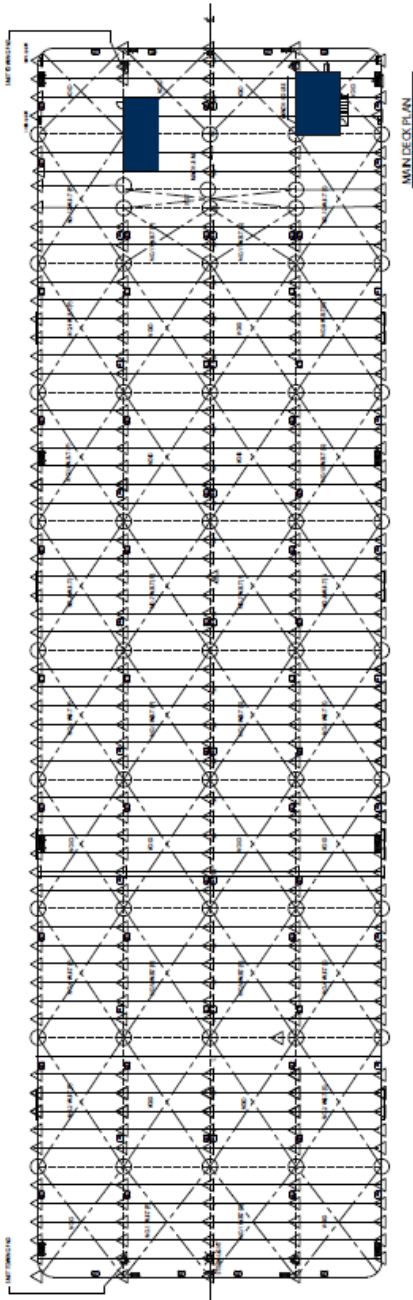
Particulars are believed to be correct but not guaranteed. Owners reserve the rights to amend the specifications without notifications. Particulars are entirely without warranty as to correctness and interested parties must inspect vessel's certificates & drawings and/or physically inspect the vessel.

LKL OCEANTRADE B.V.
Adriaen Banckerstraat 8
3115 JE Schiedam
Phone: +31 10 412 96
22
E-mail: mail@lkl.nl
www.lkl.nl



LKL Middle East Boulevard
Plaza tower 1
United Arab Emirates, Dubai
P.O. Box: 334032
Phone: +971563734526
E-mail: info@lklme.com
www.lklme.com





Particulars are believed to be correct but not guaranteed. Owners reserve the rights to amend the specifications without notifications. Particulars are entirely without warranty as to correctness and interested parties must inspect vessel's certificates & drawings and/or physically inspect the vessel.

LKL OCEANTRADE B.V.
Adriaen Banckerstraat 8
3115 JE Schiedam
Phone: +31 10 412 96
22
E-mail: mail@lkl.nl
www.lkl.nl



LKL Middle East Boulevard
Plaza tower 1
United Arab Emirates, Dubai
P.O. Box: 334032
Phone: +971563734526
E-mail: info@lklme.com
www.lklme.com

